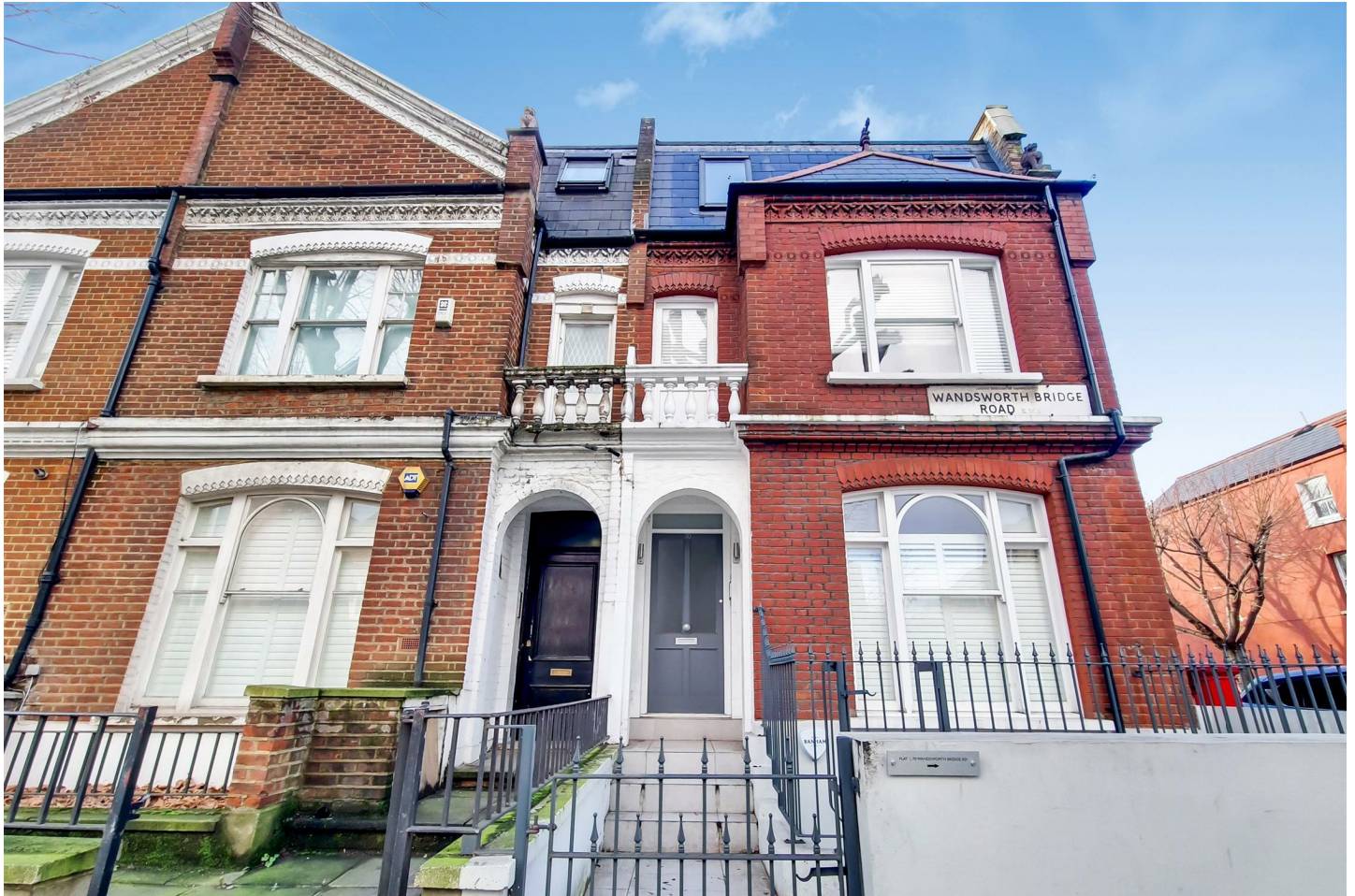




FIELDHOUSE

T: +44 (0)20 7013 0770
F: +44 (0)20 7731 1964
PROPERTY@FHRES.CO.UK
FHRES.CO.UK



Flat 4, 70 Wandsworth Bridge Road, London, SW6 2TF

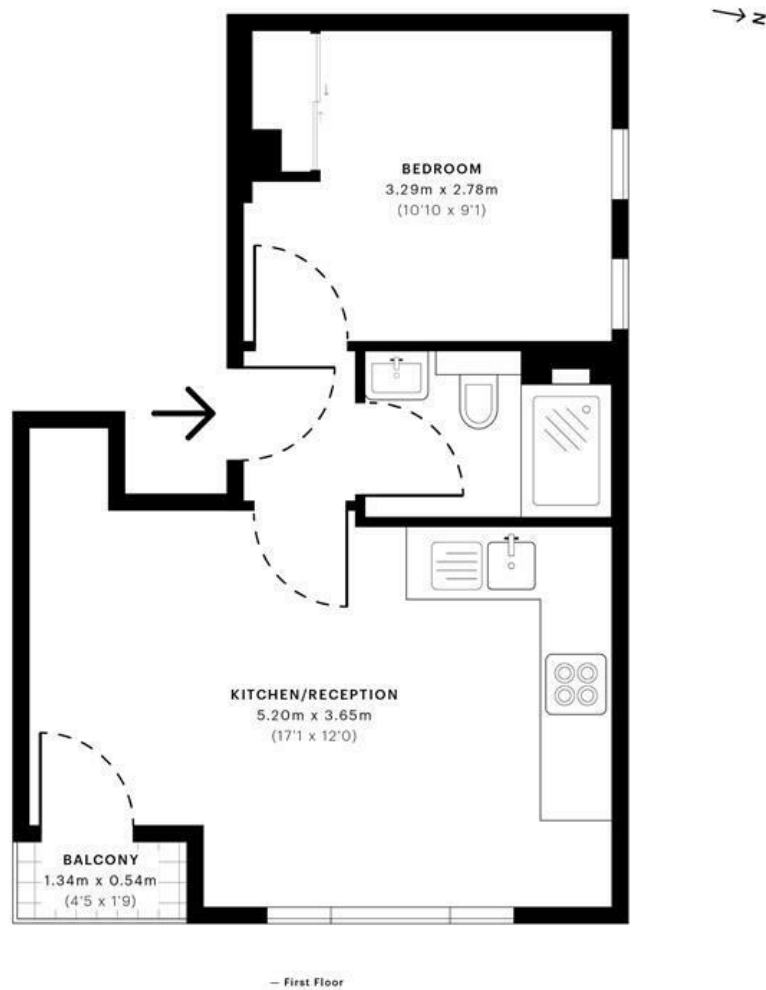
**** FULLY FURNISHED ONE BEDROOM FLAT - AVAILABLE BEGINNING OF MARCH****

ONE BEDROOM FIRST FLOOR FULLY FURNISHED FLAT AVAILABLE FOR LET. This modern property is excellently finished internally and very well furnished, it is available from the beginning of March and comprises entrance hallway, open plan reception room and kitchen, double bedroom and bathroom with shower over bath.

- ONE BEDROOM
- FULLY FURNISHED
- OPEN PLAN
- SHOWER OVER BATH
- AVAILABLE BEGINNING OF MARCH

Maximum Length of Tenancy: 12 Months
Council Tax: Hammersmith & Fulham Borough Council
Council Tax Band: D

£1,800 PCM*



Spec verified floor plans are produced in accordance with Royal Institution of Chartered Surveyors' Property Measurement Standards. Plans and gardens are illustrative only and excluded from all area calculations. Due to rounding, numbers may not add up precisely. All measurements shown for the individual room lengths and widths are the maximum points of measurements captured in the scan.

PLAN 00 RESIDENTIAL: 32.17 sqm / 346.27 sqft
PLAN 00 RESIDENTIAL: 31.03 sqm / 334.00 sqft

SPEC ID: 563c155cac4584c0dd9d442cb

Energy Efficiency Rating		
	Current	Potential
Very energy efficient - lower running costs		
(92 plus) A		
(81-91) B		
(69-80) C		
(55-68) D		
(39-54) E		
(21-38) F		
(1-20) G		
Not energy efficient - higher running costs		
England & Wales	EU Directive 2002/91/EC	

Environmental Impact (CO ₂) Rating		
	Current	Potential
Very environmentally friendly - lower CO ₂ emissions		
(92 plus) A		
(81-91) B		
(69-80) C		
(55-68) D		
(39-54) E		
(21-38) F		
(1-20) G		
Not environmentally friendly - higher CO ₂ emissions		
England & Wales	EU Directive 2002/91/EC	



FIELDHOUSE RESIDENTIAL LIMITED

Registered Address: 94 Wandsworth Bridge Road, London SW6 2TF

Registered in England No. 5097508 VAT No. GB 839 5267 87

